



- Usual collection of flat head and phillips head screw drivers
- 7 and 8mm sockets
- E10 and E11 Torx sockets

| Step | Description | Image |
|------|--|--|
| 1 | Start under the steering wheel and remove the 4 phillips head bolts from the panel with the heater duct. Lower the panel and disconnect the duct. |  A close-up photograph of the underside of a car's dashboard, specifically the area under the steering wheel. A central oval-shaped heater duct is visible. Four red arrows point to Phillips head bolts that are being removed from the panel. |
| 2 | Remove the RH panel from the lower centre console by removing the two screws, then grab the panel and rotate it clockwise while pulling towards the rear of the car. |  A photograph showing the lower right side of a car's interior. A grey plastic panel is being rotated clockwise and pulled towards the rear of the vehicle. Two red arrows point to screws on the panel. The surrounding area includes the floor mat and the lower part of the seat. |

3

Remove the windows switch pack by removing the two screws in the cubby box.



4

Tilt the unit forward and work the hand brake cover off by twisting and pulling



5

Remove the screw in the transmission cover.



6

Move the gear selector back to N to make access easier to remove the cover.



7

Lift the cover, tilt and remove the two connectors to the cigarette lighter.



8

Under the LH Dash, remove the three screws holding the panel.



9

Lower the panel and disconnect the light. Then press the two lugs holding the OBDII plug in, and withdraw the plug



10

The bolts holding the glove box in place will now be exposed.



11

Remove the four bolts, and collect the two adjustment plates/nuts that fall out.



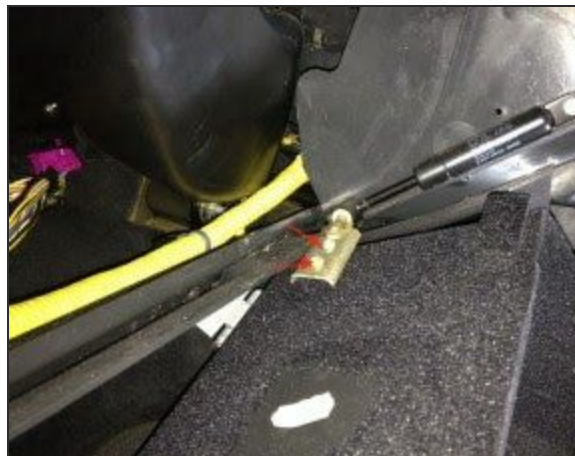
12

Open the glove box and remove the three screws holding the top in place.



13

Lower the glove box and remove the two bolts attached to the strut.



14

Remove the two screws holding the surround.



15

Lower the surround and disconnect the light. Remove the catch mechanism by depressing the two lugs shown and pulling the mechanism upwards. Remove the surround so we can get to the SRS Air Bag.



16

The four E10/11 Torx bolts will now be visible from below. Two are shown below. The others are towards the firewall.



17

Before we can remove the passenger SRS Air Bag, we need to remove the fascia panel below the front lip of the SRS Air Bag. Use plastic furniture removal clips or a couple of flat head screw drivers and ease the panel off. The second photo below shows the panel removed and the lugs that hold it in place. Be gentle and work it off from one end.



18

Now the SRS Air Bag will come out easily.



19

Remove the two screws holding the glove box button in place, and then remove the button assembly along with the cable, noting how the cable sits up behind the SRS Air Bag.



20

Now we can remove the screws holding the lower dash on the passenger side.



21

Now remove the HEVAC control panel. Just the four screws shown, pull the panel forward and remove the electrical connectors. Also remove the screw to the left of the clock as shown.



22

Remove the rubber surround from the stereo, if it has one. 2000 model Alpine unit shown below.



23

Use a couple of long flat metal strips to unlock the stereo head unit. I didn't have the correct tools so made these from an old PC expansion slot blanking plate I had lying around. Disconnect the wires and aerial from the stereo and move it out of the way.



24

Remove the two screws shown.



25

Before we can remove the upper centre console panel, we need to remove the instrument binnacle. Remove the upper and lower LH screws as shown.



26

Now remove the upper and lower RH screws indicated. The instrument binnacle will just pull out. Remember to disconnect the plug to the fuel flap release button.



27

Now we can remove the instrument cluster by removing the four screws indicated with angled arrows, and the two multi-plugs indicated with vertical arrows.

