

NOTICE

[Report a problem with this article](#)

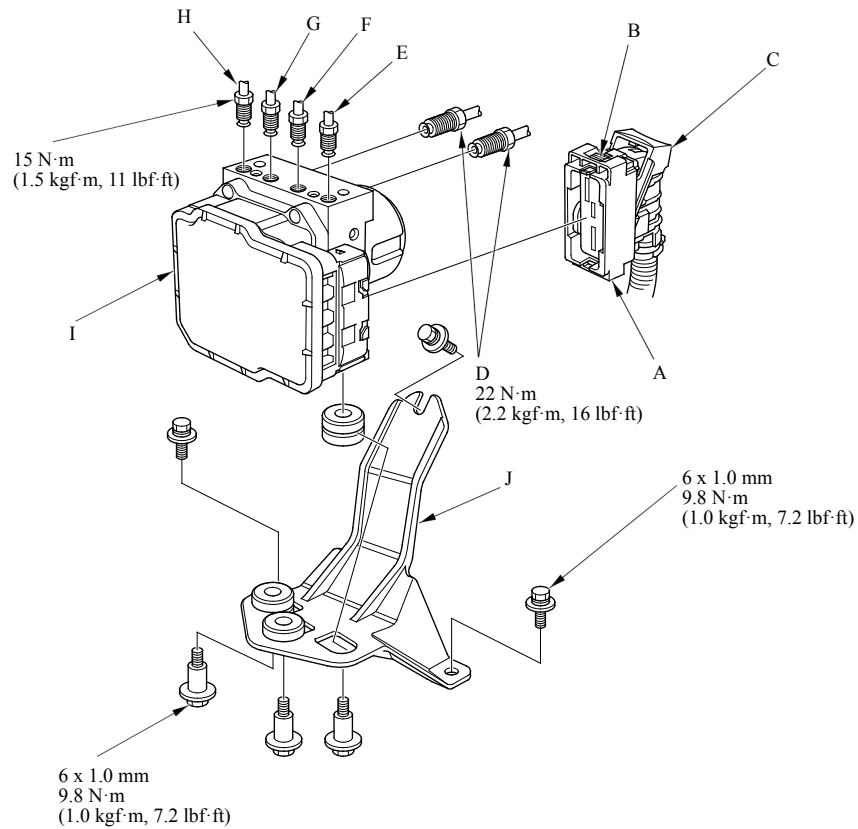
Do not spill brake fluid on the vehicle; it may damage the paint. If brake fluid gets on the paint, wash it off immediately with water.

NOTE:

- Be careful not to damage or bend the brake lines during removal and installation.
- Plug the end of a hose and joints to prevent spilling brake fluid.

Removal

1. Turn the ignition switch to LOCK (0).
2. [Remove the air cleaner.](#)
3. [Remove the resonator.](#)
4. Disconnect the VSA modulator-control unit 36P connector (A) by pushing the lock (B) and pulling down the lever (C); the connector disconnects itself.



5. Disconnect the six brake lines from the VSA modulator-control unit.

NOTE: Brake lines are connected to the master cylinder (D) and to the left-rear (E), the right-front (F), the left-front (G), and the right-rear (H) brake systems.

6. Remove the VSA modulator-control unit (I) with the bracket (J) from the body.
7. Remove the VSA modulator-control unit from the bracket.

Installation

1. Install the VSA modulator-control unit onto the bracket.
2. Install the bracket with the VSA modulator-control unit to the body.
3. Reconnect the six brake lines, then tighten the flare nuts to the specified torque.
4. Align the connecting surface of the VSA modulator-control unit 36P connector to the VSA modulator-control unit.
5. Pull up the lever of the VSA modulator-control unit 36P connector, then confirm the connector is fully seated.
6. [Reinstall the resonator.](#)
7. [Reinstall the air cleaner.](#)
8. [Bleed the brake system.](#)
9. [Do the VSA sensor neutral position memorization procedure.](#)

10. Start the engine, and make sure the ABS and the VSA indicators go off.
11. Test-drive the vehicle, and make sure the ABS and the VSA indicators do not come on.

NOTE: If the brake pedal is spongy, there may be air trapped in the modulator which could then be induced into the normal brake system during modulation. [Bleed the brake system again.](#)